

PRIME LOCATION AVAILABLE

Colonnade and Patchwork Farm Area

AVAILABLE

±1.13 acres
Cahaba River Road
Birmingham, AL

CALL FOR PRICING

ZONING/MUNICIPALITY

Jefferson County—Commercial

Located near the intersection of Blue Lake Dr. and Healthy Way on Cahaba River Road.

Prime location for a variety of uses including:

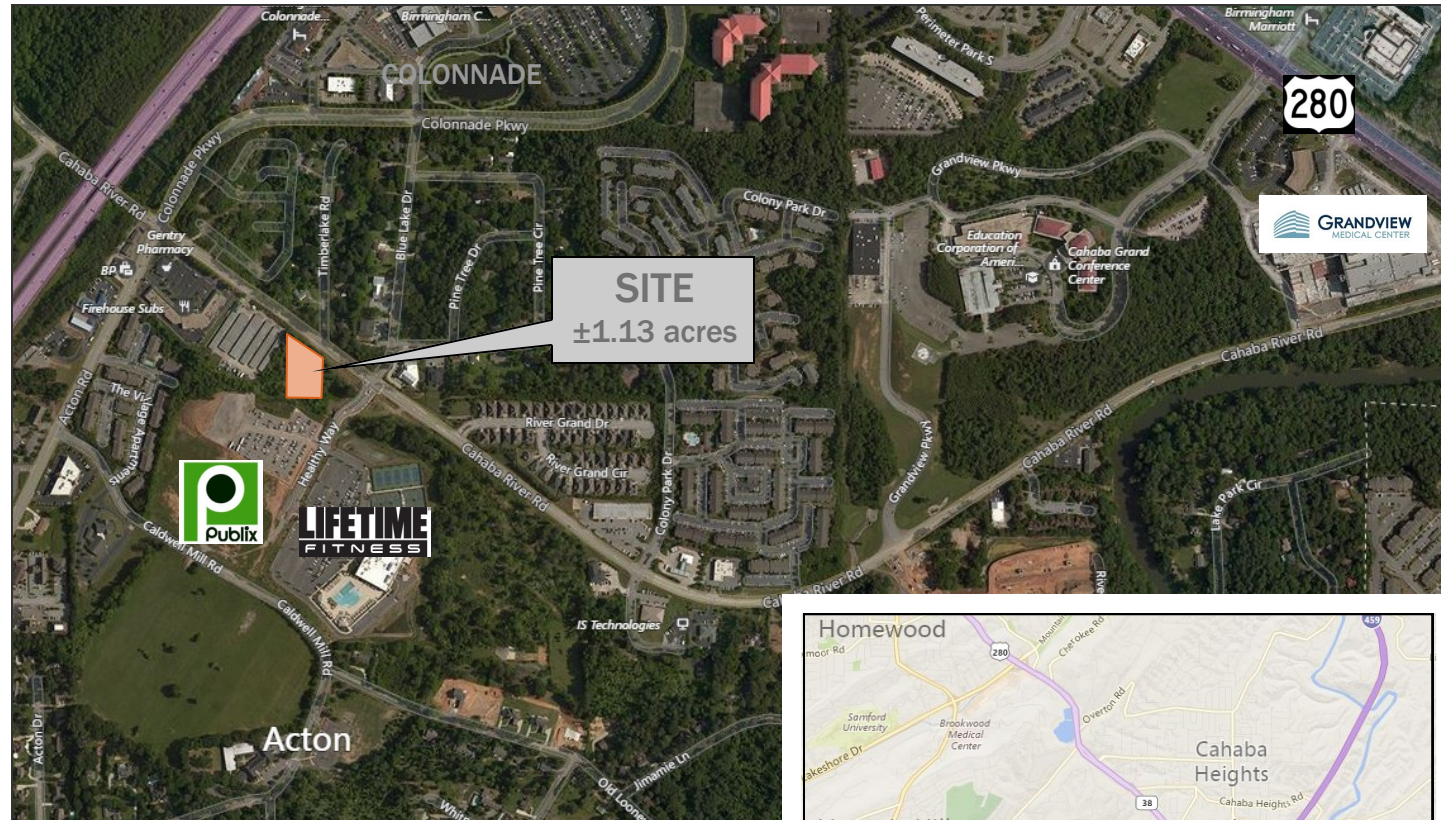
- Restaurant
- Bank
- Medical
- Office
- Retail

Popular new area surrounded by strong demographics and steady traffic flow. (11,000 VPD on Cahaba River Rd) Easy access to Hwy 280 and I-459.



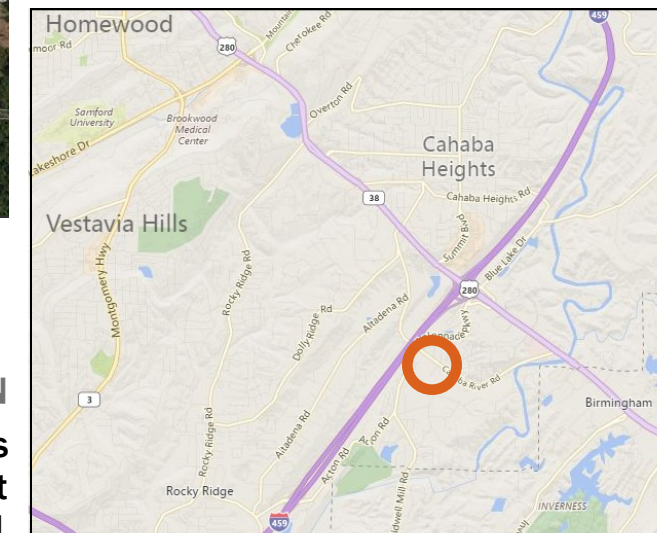
www.hollisrealstate.net

The information contained herein is from sources deemed reliable, however, Hollis Real Estate makes no warranties or representations to the accuracy thereof.



CONTACT INFORMATION

Mark Hollis
mark@hollisrealstate.net
205.943.4000 x1



3280 Morgan Dr., Suite 104
Birmingham, AL 35216

Mailing Address
PO Box 430132
Birmingham, AL 35243

